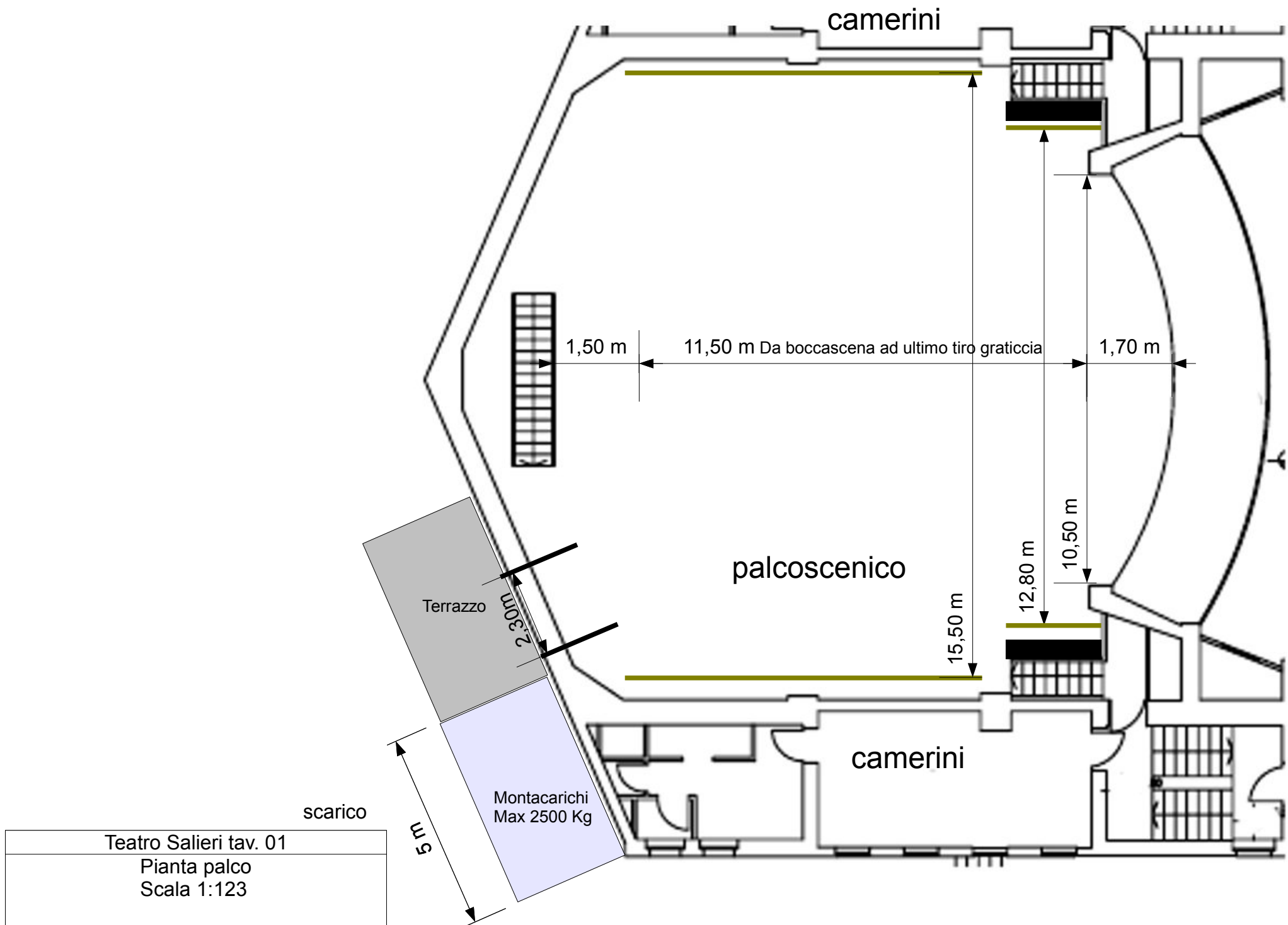


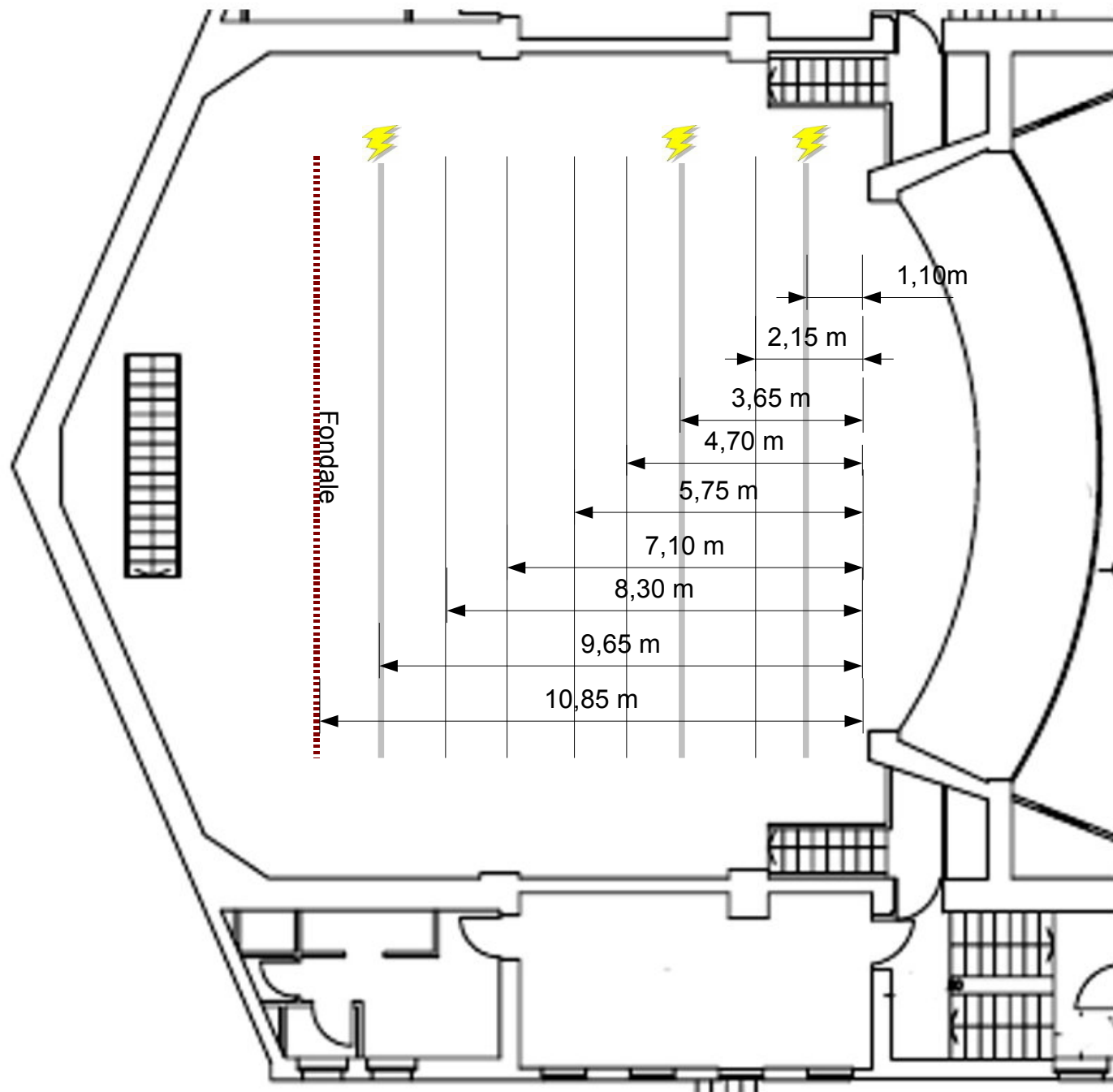
Teatro Salieri tav.00

Pianta

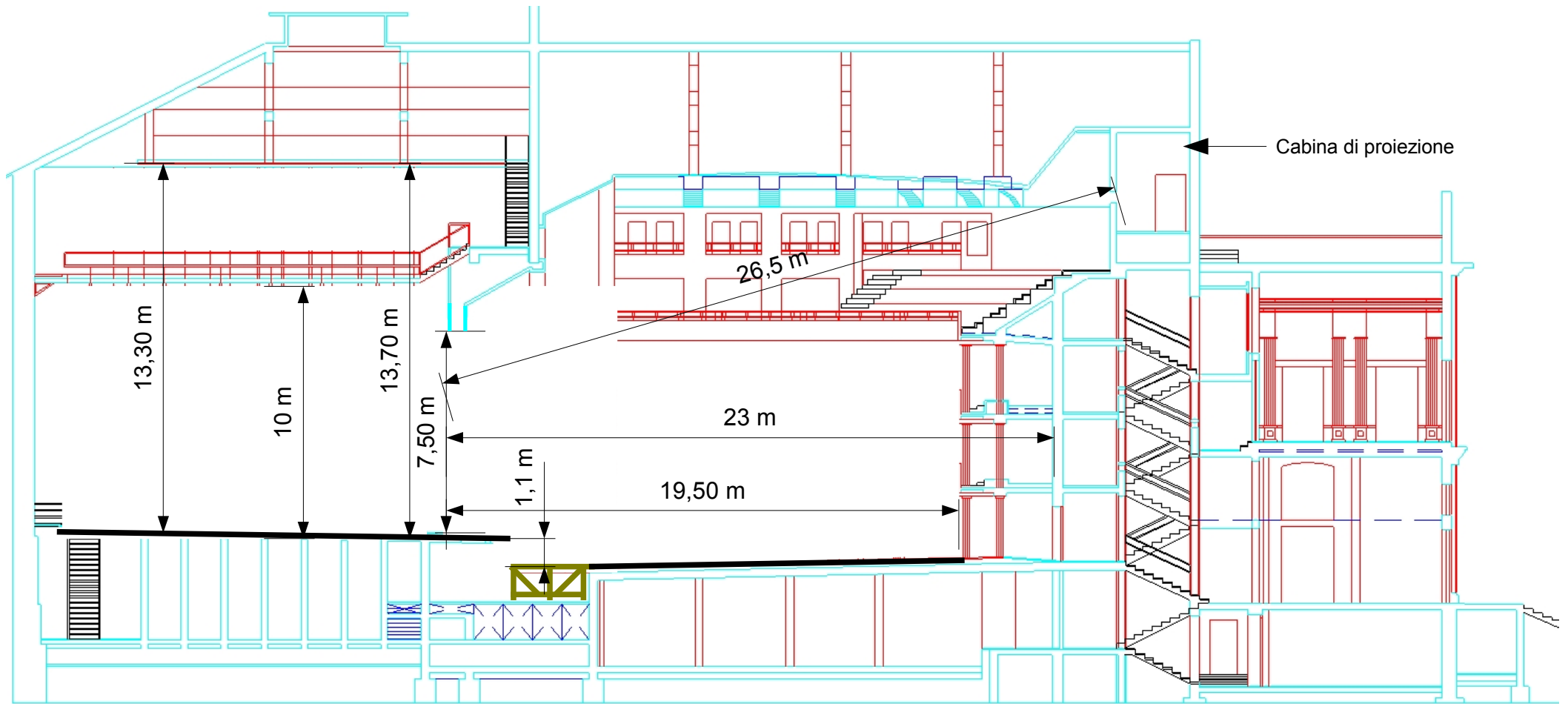


Teatro Salieri tav. 01
Pianta palco
Scala 1:123

- N°3 americane motorizzate con 15 ritorni (ponti luci) max 150kg
- N°5 americane motorizzate max 250 kg
- N°1 fondale su binario tipo sipario



Teatro Salieri tav.02
 Pianta con americane
 Scala 1:123



Teatro Salieri tav. 03
Sezione
Scala 1:212